



Friends of the Loxahatchee River February 2016



River Center Summary Statistics

Year Month	General Visitors	Program Visitors	Outreach	Gift Shop	Donations	Memberships	Sponsors	Education Programs	River Center Programs	Special Events	Volunteer Hours
2015-01	1433	645	942	\$905	\$1,583	\$185	\$550	\$564	\$1,348	\$1,379	267
2015-02	1259	308	1313	\$1,360	\$987	\$200	\$532	\$130	\$3,025	\$2,872	215
2015-03	1695	219	274	\$1,451	\$1,003	\$365	\$3,500	\$100	\$5,390	\$9,647	358
2015-04	1326	518	150	\$1,600	\$1,023	\$250	\$1,400	\$1,818	\$6,770	\$1,561	130
2015-05	1138	358	183	\$944	\$643	\$210	\$2,950	\$49	\$5,179	\$1,599	81
2015-06	2078	1031	160	\$1,355	\$837	\$200	\$520	\$3,087	\$4,365	\$420	487
2015-07	1936	1294	46	\$1,985	\$524	\$50	\$650	\$5,073	\$1,490	\$377	645
2015-08	1544	305		\$1,432	\$691	\$75	\$1,460	\$732	\$215	\$892	404
2015-09	1047	278	34	\$771	\$491		\$520	\$60		\$160	116
2015-10	1055	549		\$872	\$636	\$25		\$128	\$128	\$626	139
2015-11	881	255	140	\$1,192	\$560	\$150	\$460		\$667	\$815	128
2015-12	1078	277	51	\$2,749	\$663	\$250	\$8,460	\$82	\$210	\$186	142
2016-01	1083	606		\$1,083	\$496	\$150	\$2,410	\$93	\$4,065	\$679	143

River Center

River Center staff participated in an Active Shooter Training class in January. Plans are to brainstorm and run training scenarios every six months. Also, the River Center hosted the Loxahatchee River Management Coordinating Council (LRMCC) and the Florida Association of Environmental Professionals (FAEP).

Friends of the Loxahatchee River

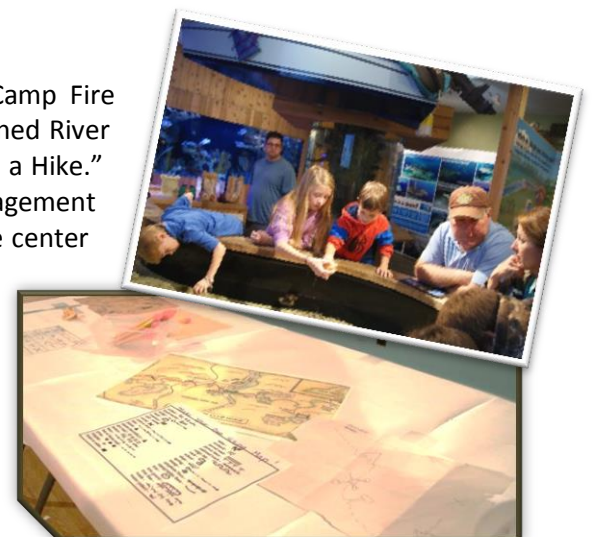
Friday, February 5, the River Center welcomed Benji Studt, the Environmental Program Supervisor from Palm Beach County's Department of Environmental Resources Management, as he presented a discussion entitled "Palm Beach County's Natural Areas: Healing the Land and Opportunities for Adventure." He discussed the restoration efforts that have occurred at our local natural areas and how they are ready to be explored by nature lovers. Over 70 guests attended this excellent lecture.



Special Programs

Loxahatchee by Night Campfire

The River Center continued with the "Loxahatchee by Night" Camp Fire season on Friday, January 8th. Over 40 participants of all ages joined River Center educators for a night of fun. Our January theme was "Take a Hike." In our Chiki Hut, Benji Studt of PBC Environmental Resource Management presented a fantastic talk about our local natural areas. Inside the center guests had the opportunity to create their own trail maps! Guests were invited to explore the exhibits inside the center, touch animals in the touch tank, and discover various plants and animals in the migratory bird and butterfly garden. The campfire



was roaring all night, as families roasted marshmallows and enjoyed delicious s'mores throughout the evening.

River Center's Adult Environmental Education Program: "Separating" Myth from Reality: Squid Dissection

On Thursday, January 21st the River Center hosted another Adult Environmental Education Series titled "Separating" Myth from Reality: Squid Dissection and the Family Cephalopod. Ancient Greek mariners told tales of a sea creature with giant tentacles called Scylla. Norseman warned of the Kraken, a fearsome ocean monster large enough to pull massive whaling ships deep beneath the waves. From Homer's epic poetry of 8th century BC, to Jules Verne's depiction in Twenty Thousand Leagues under the Sea in 1870, and even an appearance in the popular Pirates of the Caribbean



the Caribbean

movie franchise in 2006, the legends persist. So what exactly is this creature that has terrified seafarers and captivated our imaginations? Thirteen participants had a chance to work together in teams, using proper dissection tools and techniques, to perform a scientific dissection of a squid. They also learned about the classification of squid, their anatomical characteristics, and their unique adaptations. We uncovered the reality behind one of our ocean's greatest mysteries.



Girl Scout Fishing Clinic

Ten Girl Scouts and six parents attended the clinic conducted at Burt Reynolds Park on Saturday, January 9th. The program began with a classroom session lasting about 45 minutes, discussing fishing regulations, knot tying, various forms of tackle, and fish identification. Before heading down to the water, we discussed the importance of safety while fishing, and considered potential hazards if these rules were neglected (i.e. holding the fishing pole vertical by your side, being aware of your surroundings when casting, and hooks). We had a successful day of fishing, with a variety of fish caught.



Project Learning Tree

On Saturday, January 30th Community Outreach Coordinator, Sara Duggan, and Environmental Education Manager Jocelyn O'Neill attended the Project Learning Tree training at Pine Jog Environmental Education Center. The training was conducted by Danielle Vande Zande, former River Center intern and now an environmental education specialist at Pine Jog. Project Learning Tree is an award-winning environmental education program designed for teachers and other non-formal educators, parents, and community leaders working with youth from preschool through grade 12. This particular style of teaching encourages students how to think, not what to think. The River Center plans to use the training and resources provided to enhance our environmental education programs.



Education Training: Project Flying WILD and Schoolyard WILD at MacArthur Beach State Park

River Center staff Sara Duggan and Megan Harris attended Project WILD training at John D. MacArthur Beach State Park on Monday, January 4th. Project WILD is one of the most widely-used conservation and environmental education programs among educators of students in kindergarten through high school. It is based on the premise that young people and educators have a vital interest in learning about our natural world. The workshop incorporated Project Flying WILD focusing on environmental education and birds and Schoolyard WILD creating classroom and schoolyard programs for the River Center's future education programs.

Special Dr. Seuss Story Time

On Thursday, January 21st the River Center hosted a special Dr. Seuss Story Time. Over 50 parents and young children came to celebrate all things Seuss. We read "If I Ran the Zoo" and "Green Eggs and Ham" and danced to silly Seuss songs. Afterwards children got a chance to get up close to touch tank animals that look like they are right out of the world of Dr. Seuss. Families were then invited to make Truffula trees, the Lorax mustaches, Thing 1s and Thing 2s, and create their very own creatures from their imagination.



Outreach Activities

Port Salerno Seafood Festival:

Environmental Education Coordinator Megan Harris participated in the Port Salerno Seafood Festival on Saturday January 30th, as an exhibitor showcasing the environmental education programs of the River Center. This event featured live music, arts & crafts, vendors, a kid's fun zone, and the very best seafood on the Treasure Coast. The River Center's booth saw over 350 visitors getting out information about the Loxahatchee River, the River Center, and upcoming programs and events.



Volunteer of the Month: The River Center's February Volunteer of the Month is awarded to Ken Stark. Ken came to the River Center in October 2015 and said "I would like to help wherever needed!" He has been volunteering every week since earning over 45 hours of service. Ken is our Mr. Fix It, visitor greeter, touch tank docent, and tank interpreter. He is always willing to help with a smile on his face and the River Center appreciates all of his hard work and dedication. We are honoring his continued service and thank him for being part of our River Center family!

Friends Membership – 73 active members; 3 new/renewals; 44 current sponsors

Annual Sponsors Recognition – **Morgan Procter, John & Carol Vispo, Ann Howard, Edward Butzin – Wolverine Ventures**

Shark Exhibit Sponsors – Peter & Elanie McCusker

Night on the Loxahatchee Sponsors – Cotleur - Hearing

Upcoming River Center Events – RSVP at rivercenter@lrecd.org or 561-743-7123.

February 20 – 10 a.m. Sharks for Families! A special program with arts and crafts, games, and information about sharks.

February 23 – “If You Build It, They Will Come” 3 p.m. – Special presentation given by Jupiter High School Environmental Academy senior, Josh Wenkert-Lane. As part of his senior project, Josh will provide information about both local and migrating birds, their needs and habitats, and ways that we can help and support them. Please come and support this budding environmental educator!

March 4 – 12pm: Friends of the Loxahatchee River. Join us for an adventurous look at sharks in anticipation of our new exhibit opening in March!

March 9 – 5:30 p.m.: hYPe of the North Palm Beach Chamber of Commerce – Young professionals of the area will mix and mingle at the River Center while enjoying our new shark exhibit.

March 15 – 9 a.m.: River Center Public Kayak Tour

March 17 – 10 a.m. and 1 p.m.: “Jupiter U” – new or “seasoned” residents of Jupiter venture from place to place learning about all that Jupiter has to offer. They will attend either a kayak trip (morning) or an Adult Education session (afternoon) at the River Center.

March 17 – 6 p.m.: Shark presentation to be given at PGA National.

April 2 – 7pm: Save the Date! Night on the Loxahatchee: Shipwrecked in Paradise annual fundraiser for the River Center. Presentations by shipwreck and pirate experts, food by Food Shack and imported wines.

SOCIETYDIARY

Place of Hope's work with kids ...

No. 1 AGAIN



Chatter
CAROL
SAUNDERS

Executive Director Charles Bender. "Our entire Place of Hope network can take credit for changing the lives of children in need and doing so in a manner of transparency, quality and excellence."

Place of Hope features several programs and locations, including Villages of Hope of Palm Beach Gardens, a smaller campus and extended foster care program for youth who age out of the system; Joann's Cottage of Palm Beach Gardens, a maternity home for young mothers and pregnant young women; Place of Hope at The Leighan and David Rinker Campus in Boca Raton; and new foster parent recruitment offices in Hobe Sound and Port St. Lucie.

Currently, Place of Hope at The Leighan and David Rinker in Boca Raton is home to foster children in The Genesis Cottage, and the Alumni Impact Girls' Cottage is home to young women who have aged out of care. In 2015, Place of Hope expanded beyond Palm Beach County into Martin, St. Lucie, Okeechobee and Indian River counties with its

model of family-style, community-centric programs and outreach.

Place of Hope is located in Palm Beach Gardens. For more information, call 561-775-7195 or visit online at www.placeofhope.com.

NIGHT ON THE LOXAHATCHEE TO BENEFIT THE RIVER CENTER

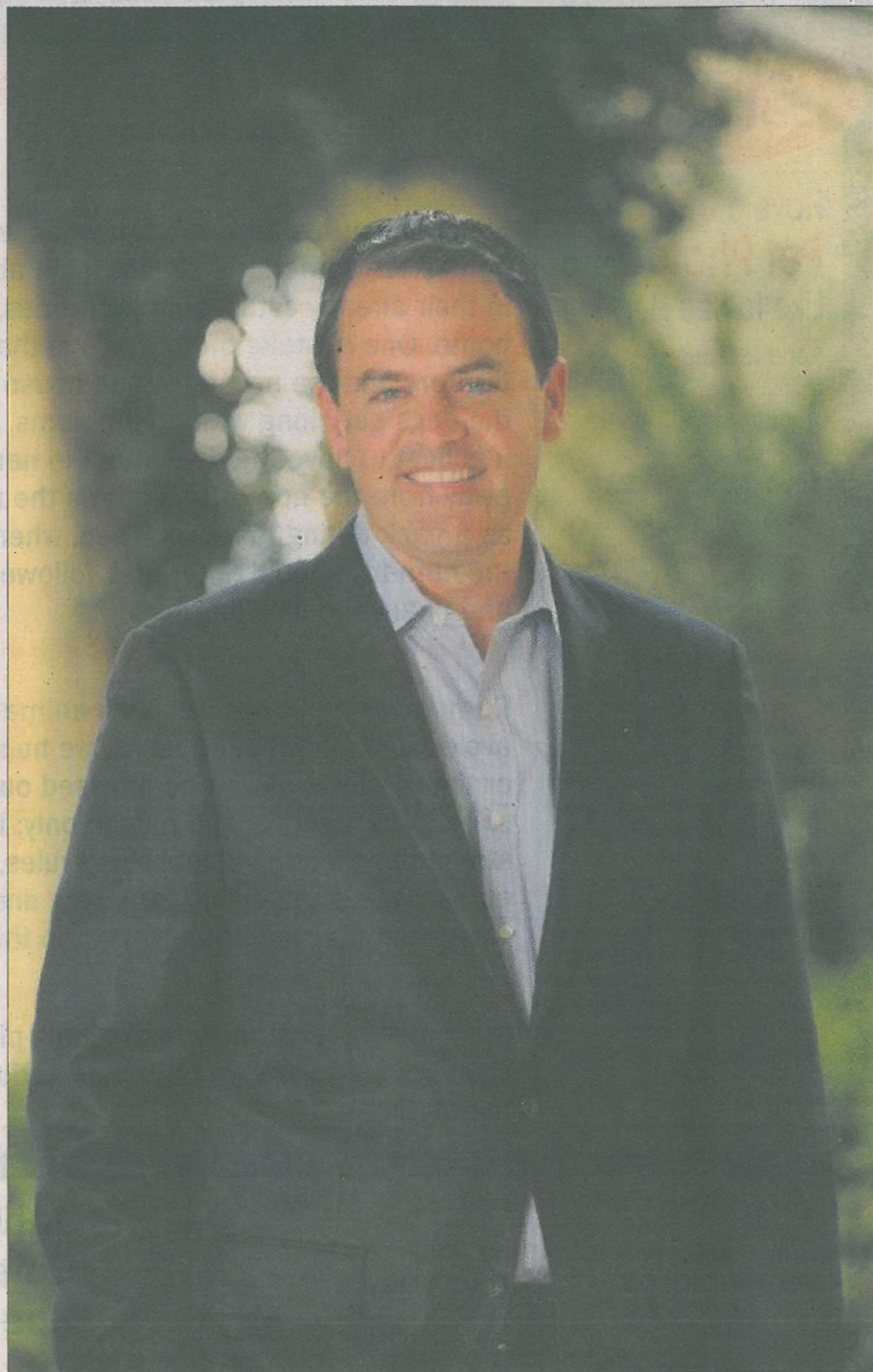
Night on the Loxahatchee, with a theme of "Shipwrecked in Paradise," the annual benefit for the River Center in Jupiter will be held Saturday, April 2 from 7 to 9:30 p.m.

The proceeds raised will help fund the outstanding environmental education programming the River Center offers to all ages throughout the year.

This highly anticipated event offers opportunities for socializing and learning more about one of the area's greatest natural resources, the Loxahatchee River.

Fascinating expert speakers, engaging storytellers, unique entertainment, silent auction items and raffles are also a hallmark of this event. The delicious fare from the legendary Food Shack always creates a buzz with its unique, gourmet spin on local culinary delights.

This year's "Shipwrecked in Paradise" theme will harken back to the days of paddle boats and early families in Jupiter accompanied



PROVIDED PHOTO

Place of Hope, one of Palm Beach County's largest children's organization, earned the highest ranking of excellence in 2015 for its work with youth from the nation's largest charity rating service, Charity Navigator. The award was presented to Executive Director Charles Bender, pictured, who said, "Our entire Place of Hope network can take credit for changing the lives of children in need and doing so in a manner of transparency, quality and excellence."

Place of Hope, one of the largest children's organizations in Palm Beach County, earned the highest ranking of excellence in 2015 for its work with youth from the nation's largest charity rating service Charity Navigator.

The year 2015 marks the second year in a row that Place of Hope has ranked highest in the category of "Youth Development, Shelter and Crisis Services" by Charity Navigator.

In 2014, Place of Hope's top ranking was featured in The Huffington Post as one of the charities that "changed the world."

According to Charity Navigator, "Only 9 percent of the charities rated have received at least four consecutive 4-star evaluations, indicating that Place of Hope outperforms most other charities in America. This 'exceptional' designation from Charity Navigator differentiates Place of Hope from its peers and demonstrates to the public it is worthy of their trust."

The confirmation, which was announced Dec. 23, of its second consecutive, first-place ranking came as wonderful news to the leadership of Place of Hope.

"We thank God and congratulate our family of donors, supporters, volunteers and staff as we all celebrate this momentous occasion and recognition for the nation's most highly regarded evaluator of nonprofit organizations," said Ex-

SOCIETY DIARY

HOPE from 6

by musical performers to help transport our visitors to another time.

As always, guests can count on a savory selection of hors d'oeuvres to enjoy at the event. The Food Shack Restaurant has created a "river inspired" menu and wines from African Tradition Wines and locally roasted gourmet coffee by Oceana Coffee will be served.

Tickets to Night on the Loxahatchee are \$60 per person with a \$10 discount for members of Friends of the Loxahatchee River. (Limit two tickets at discount rate per membership.) Tickets are \$70 after March 22.

For information about the event, sponsorship opportunities, the River Center, or to purchase tickets by phone, please call 561-743-7123 or click on www.loxahatcheeriver.org.

THE 79TH ANNUAL "SILVER SAILFISH DERBY" SET FOR JAN. 6-9

The West Palm Beach Fishing Club's 79th annual "Silver Sailfish Derby," headquar-



PROVIDED PHOTO

Steve Weagle, emcee at Night on the Loxahatchee, and Jocelyn O'Neill, environmental education manager of The River Center