

MEMORANDUM

TO: Albrej Arrington, Ph.D. / Loxahatchee River District

COPY: Clint Yerkes / Loxahatchee River District
Tom Vaughn / Loxahatchee River District
John Koroshec / Hazen and Sawyer
Taylor Bomarito / Hazen and Sawyer

FROM: Albert Muniz / Hazen and Sawyer

DATE: July 12, 2016

FILE: 42009-025.3.1.3

SUBJECT: Loxahatchee River District
Engineer's Monthly Status Report through June 2016

The following is a summary of work performed by Hazen and Sawyer, P.C. (Hazen) on Loxahatchee River District (LRD) projects through the above referenced date.

General Operational Assistance – This project involves providing LRD with engineering assistance related to wastewater operations.

Monthly Progress

- LRD staff and Hazen personnel continue to communicate to discuss plant operations on an as needed basis. The wastewater treatment process continues to perform well
- Hazen continues to provide assistance on an as needed basis

Deep Bed Sand Filters – Final Design and Construction Management Services – The existing traveling bridge filters and filter structure have served the LRD wastewater treatment facility for over 20 years and are in need of significant rehabilitation and repair. In lieu of repair and replacement, it is the LRD staff's desire to replace the filters with deep bed sand filters. Deep bed filters offer additional benefits over traveling bridge filters including de-nitrification capabilities as well as proven performance during plant upset conditions. Design of the project is complete and the project has entered the construction phase.

Monthly Progress

- Kirlin was issued a Notice to Proceed on January 18, 2016
- Progress meetings are being held bi-monthly
- Shop drawings submittals from the contractor are progressing
- Kirlin has completed the concrete pour on the east side filter trench bottom slab at elevation 17.50
- Installation of formwork for the east side filters floor slab at elevation 20.50 continues
- Installation of formwork and steel placement for the deep bed west side filters middle walls and filter trench bottom slab at elevation 17.50 continues

- Installation of 36-inch filter effluent pipe continues on the south side of the filters
- Excavation for and installation of underground electrical ductbank is proceeding



Mechanical Integrity Testing for 2016 – Hazen was authorized to begin permitting for the 2016 standard 5-year Mechanical Integrity Test (MIT) as required by the injection well operating permit. Testing must be completed by May 31, 2016. Below is a summary of activities performed to date:

- Hazen submitted the MIT plan to FDEP on November 11, 2015
- FDEP reviewed the plan and approved it on November 13, 2015
- Hazen finalized design and assisted with negotiations of contract with All Webb's Enterprises to perform MIT work
- Project pre-construction meeting planned for April 6
- MIT work
 - ✓ Casing pressure test completed April 14
 - ✓ Video survey completed April 15
 - ✓ Temperature log completed April 18
 - ✓ Radioactive Tracer Survey completed April 18
- MIT Report submitted to FDEP May 19, 2016
- FDEP approves MIT Report May 27, 2016
- Project has been completed on time and budget

Hazen



Mechanical Integrity Testing

Injection Well No. 1 (IW-1) at the
Loxahatchee River District
Wastewater Treatment Facility

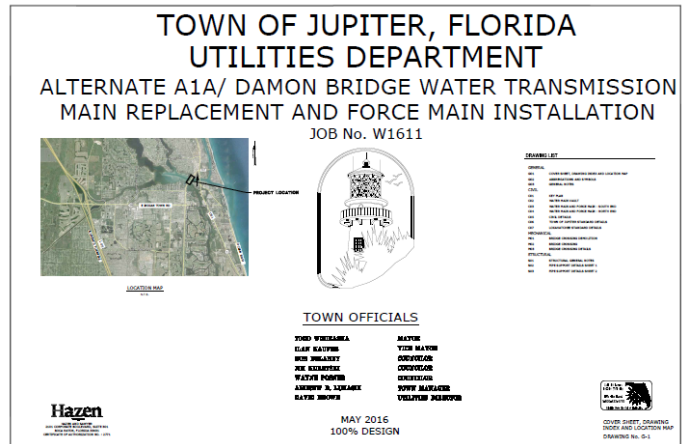
May 2016

Alternate A1A/Damon Bridge Water Transmission Main Replacement and Force Main Installation – Hazen was authorized to design a new 16-inch force main pipeline in parallel with a Town of Jupiter water main replacement on the Alternate A1A Bridge in Jupiter. Below is a summary of activities performed to date:

- Hazen submitted the draft 100% complete contract documents, cost estimate, and preliminary construction schedule on May 27, 2016. On June 29, 2016 LRD staff asked Hazen to revise the 16-inch force main design to incorporate a change in pipe material from steel to 304 stainless steel. Hazen is proceeding with the incorporation of this design change into the contract documents.

After draft and final copies of all permits were reviewed by LRD, the following permit applications were submitted by Hazen. The status of each permit application is included in the summary below:

- ✓ Town of Jupiter Engineering/Utility Permit application submitted on May 31, 2016 - *Under Review*
 - ✓ FDEP/DOH Wastewater Permit application submitted on June 8, 2016 – *Issued on June 15, 2016*
 - ✓ ACOE General Permit application submitted on June 8, 2016 – *Under Review*
 - ✓ FDEP ERP Exemption Request submitted on June 9, 2016 – *Request for Additional Information received on July 8, 2016*
 - ✓ FDOT Utility Permit application submitted on June 15, 2016 – *Under Review*
- Project is continuing on budget and on schedule



As always, please feel free to contact us should you have any questions or need to discuss the progress of any of the above projects in more detail.



HOLTZ CONSULTING ENGINEERS, INC.
270 South Central Boulevard, Suite 207, Jupiter, FL 33458 (561) 575 2005

MEMORANDUM

To: Clint Yerkes, Deputy Director, Loxahatchee River Environmental Control District

From: Christine Miranda, PE
Holtz Consulting Engineers, Inc.

Date: July 14, 2016

Subject: **Loxahatchee River Environmental Control District Monthly Status Report**

The following is a summary of work performed by Holtz Consulting Engineers, Inc. (HCE) on Loxahatchee River District projects through July 14, 2016:

Loxahatchee River Road Reclaimed Water Main Replacement and Force Main Extension

- The 30% design plans for the new force main will be submitted for review by the beginning of August. Upon incorporation of the force main design into the project the plans and specifications will be finalized and the project can be advertised for bidding.

Jupiter Plantation Lift Station #13 Force Main Replacement

- The Notice to Proceed was issued on June 20, 2016. Construction has commenced on the project. Two directional drills have already been completed by the Contractor.
- All shop drawing submittals have been reviewed and approved.

Maplewood Lift Station #21 Force Main Extension

- The preconstruction meeting was held on June 23, 2016.
- The Notice to Proceed was issued on June 27, 2016.
- All shop drawing submittals have been reviewed and approved.

Turtle Creek Phase I

- The 100% design submittal was transmitted to LRD staff on June 22, 2016.
- The project was advertised for bidding on June 26, 2016.
- The pre-bid meeting is scheduled for July 19, 2016 and the bid opening is scheduled for August 5, 2016.

Turtle Creek – North End – Subsystem 3 Low Pressure Force Main System

- Survey has commenced on the project and we anticipate receipt of the survey by the end of July. The 30% design submittal is scheduled to be submitted by the end of August.



*Loxahatchee River Environmental Control District
Monthly Status Report
July 11, 2016*

Submitted To: Clinton Yerkes, Deputy Director

The following is a summary of work performed by Mathews Consulting, Inc. (MC) on District projects through July 8, 2016.

Alternate A1A Forcemain Design

The final survey for the project has been completed. MC developed the Base Drawings. MC began coordinating with the Utility Companies to determine the location of their underground utilities in the project area. MC also coordinated with Hazen and Sawyer regarding connection points at the Bridge. MC began developing the 50% design documents.

Whispering Trails Preliminary Design

MC held a kick-off meeting with the District on 4-28-16. MC completed the preliminary layout for the Gravity Sewer System and the Low Pressure Sewer System. The District provided MC comments on both layouts. MC submitted the Draft preliminary layouts and cost estimates for three (3) options to the District for review. The District provided comments back to MC and we are finalizing the Draft Report.

Respectfully Submitted by:

MATHEWS CONSULTING, INC.

Rene L. Mathews, P.E.
President