

MEMORANDUM

TO: Albrey Arrington, Ph.D. / Loxahatchee River District

COPY: Clint Yerkes / Loxahatchee River District
Tom Vaughn / Loxahatchee River District
John Koroshec / Hazen and Sawyer
Felipe Martinez / Hazen and Sawyer

FROM: Albert Muniz / Hazen and Sawyer

DATE: June 9, 2016

FILE: 42009-025.3.1.3

SUBJECT: Loxahatchee River District
Engineer's Monthly Status Report through May 2016

The following is a summary of work performed by Hazen and Sawyer, P.C. (Hazen) on Loxahatchee River District (LRD) projects through the above referenced date.

General Operational Assistance – This project involves providing LRD with engineering assistance related to wastewater operations.

Monthly Progress

- LRD staff and Hazen personnel continue to communicate to discuss plant operations on an as needed basis. The wastewater treatment process continues to perform well
- Hazen continues to provide assistance on an as needed basis

Deep Bed Sand Filters – Final Design and Construction Management Services – The existing traveling bridge filters and filter structure have served the LRD wastewater treatment facility for over 20 years and are in need of significant rehabilitation and repair. In lieu of repair and replacement, it is the LRD staff's desire to replace the filters with deep bed sand filters. Deep bed filters offer additional benefits over traveling bridge filters including de-nitrification capabilities as well as proven performance during plant upset conditions. Design of the project is complete and the project has entered the construction phase.

Monthly Progress

- Kirlin was issued a Notice to Proceed on January 18, 2016
- Kirlin has secured all building and trailer permits and has been mobilizing on-site
- Progress meetings are being held bi-monthly
- Shop drawings submittals from the contractor are progressing
- Kirlin has completed the first concrete pour on the filter structure for the backwash tanks at elevation 15.0
- Installation of formwork and steel placement for the deep bed filters middle walls and filter bottom

slab at elevation 17.0 continues

- Excavation for installation of underground electrical ductbank is also proceeding



Mechanical Integrity Testing for 2016 – Hazen was authorized to begin permitting for the 2016 standard 5-year Mechanical Integrity Test (MIT) as required by the injection well operating permit. Testing must be completed by May 31, 2016. Below is a summary of activities performed to date:

- Hazen submitted the MIT plan to FDEP on November 11, 2015
- FDEP reviewed the plan and approved it on November 13, 2015
- Hazen finalized design and assisted with negotiations of contract with All Webb's Enterprises to perform MIT work
- Project pre-construction meeting planned for April 6
- MIT work
 - ✓ Casing pressure test completed April 14
 - ✓ Video survey completed April 15
 - ✓ Temperature log completed April 18
 - ✓ Radioactive Tracer Survey completed April 18
- MIT Report submitted to FDEP May 19, 2016
- FDEP approves MIT Report May 27, 2016
- Project has been completed on time and budget

Hazen



Mechanical Integrity Testing

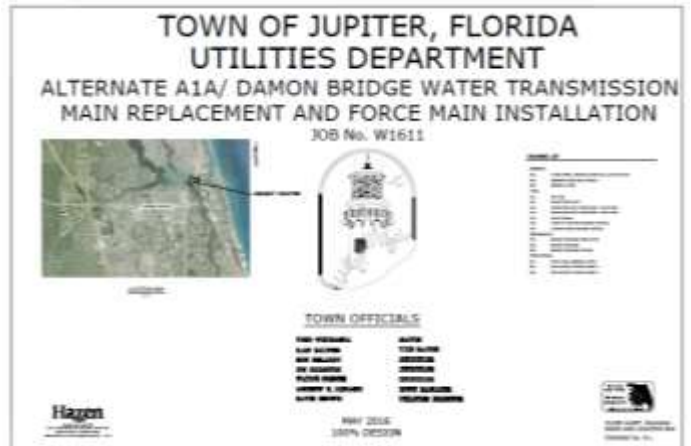
Injection Well No. 1 (IW-1) at the
Loxahatchee River District
Wastewater Treatment Facility

May 2016

Alternate A1A/Damon Bridge Water Transmission Main Replacement and Force Main Installation – Hazen was authorized to design a new 16-inch force main pipeline in parallel with a Town of Jupiter water main replacement on the Alternate A1A Bridge in Jupiter. Below is a summary of activities performed to date:

- Hazen submitted the draft 100% complete contract documents, cost estimate, and preliminary construction schedule on May 27, 2016. A review meeting will be held to discuss LRD comments

- After draft and final copies of all permits were reviewed by LRD, Hazen submitted the following permits to their associated agencies:
 - ✓ Town of Jupiter Engineering/Utility Permit application submitted on May 31, 2016
 - ✓ FDEP/DOH Wastewater Permit application submitted on June 8, 2016
 - ✓ ACOE General Permit application submitted on June 8, 2016
 - ✓ FDEP ERP Exemption Request submitted on June 9, 2016
 - ✓ FDOT Utility Permit application planned to be submitted by June 15, 2016
- Project is continuing on budget and on schedule



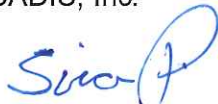
As always, please feel free to contact us should you have any questions or need to discuss the progress of any of the above projects in more detail.

**LOXAHATCHEE RIVER ENVIRONMENTAL CONTROL DISTRICT
ENGINEER'S MONTHLY STATUS REPORT THRU MAY 31, 2016**

JUPITER INLET COLONY NEIGHBORHOOD REHABILITATION

- Ongoing review of shop drawings.
- Modifications to construction plans to narrow the pavement width per JIC request was completed.
- Meetings with Contractor and surveyor on CAD base sheets.
- Overall CAD base sheet is being developed for surveyors use.
- Surveyor staked out control points in the field.
- Contractor completed construction schedule/sequence in accordance with Contract Documents.
- Development of the draft change order for roadway width cost adjustments was completed and the Contractor is addressing unit costs for those new items.
- Contractor gave notification that they will begin mobilizing machines and equipment after the Memorial Day Holiday.

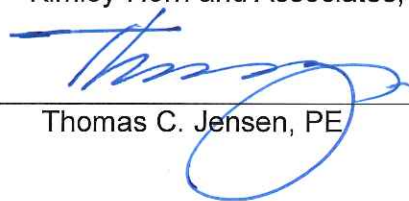
ARCADIS, Inc.



Sira Prinyavivatkul, PE

(SIGNS BY TOM JENSEN ON
HIS BEHALF).

Kimley-Horn and Associates, Inc.



Thomas C. Jensen, PE



HOLTZ CONSULTING ENGINEERS, INC.
270 South Central Boulevard, Suite 207, Jupiter, FL 33458 (561) 575 2005

MEMORANDUM

To: Clint Yerkes, Deputy Director, Loxahatchee River Environmental Control District
From: Christine Miranda, PE, Holtz Consulting Engineers, Inc.
Date: June 9, 2016
Subject: **Loxahatchee River Environmental Control District Monthly Status Report**

The following is a summary of work performed by Holtz Consulting Engineers, Inc. (HCE) on Loxahatchee River District projects through June 9, 2016:

Loxahatchee River Road Reclaimed Water Main Replacement and Force Main Extension

- The submerged land lease has been issued by the Florida Department of Environmental Protection.
- The work authorization for the force main extension from Eagle's Nest was approved at the May board meeting. Survey will commence on June 20, 2016. The 30% design plans will be submitted for review by August 1, 2016. Upon incorporation of the force main design into the project the plans and specifications will be finalized and the project can be advertised for bidding.

Jupiter Plantation Lift Station #13 Force Main Replacement

- The Notice to Proceed was issued to the Contractor on May 31, 2016.
- The Contractor has submitted shop drawings for review and approval. HCE has reviewed the shop drawings and returned comments back to the Contractor.
- Maintenance-of-Traffic (MOT) plans for Palm Beach County and the Town of Jupiter have been prepared and submitted by the Contractor.

Maplewood Lift Station #21 Force Main Extension

- The project was awarded to Felix Associates of Florida. Upon execution of the contract documents, a preconstruction meeting will be scheduled for the project and a Notice to Proceed will be issued.
- The Contractor has submitted some shop drawings for review and approval. HCE staff is currently reviewing the shop drawings.

Turtle Creek Phase I

- Comments on the 90% plans were received on June 6, 2016. We are working on incorporating the comments and finalizing the plans. Upon receipt of comments on the Contract Documents, the project can be finalized and the 100% plans and specifications can be submitted to LRD and the project can be advertised for bidding.
- The Florida Department of Environmental Protection Permit was received on June 6, 2016.

Turtle Creek – North End – Subsystem 3 Low Pressure Force Main System

- Survey has commenced on the project. The 30% design submittal is scheduled to be submitted by the end of August.



*Loxahatchee River Environmental Control District
Monthly Status Report
June 9, 2016*

Submitted To: Clinton Yerkes, Deputy Director

The following is a summary of work performed by Mathews Consulting, Inc. (MC) on District projects through June 9, 2016.

Alternate A1A Forcemain Design

The survey for the project is underway. The draft survey was completed and MC ground-truthed the survey. The final survey will be completed on 6-13-16.

Whispering Trails Preliminary Design

MC held a kick-off meeting with the District on 4-28-16. MC completed the preliminary layout for the Gravity Sewer System and the Low Pressure Sewer System. The District provided MC comments on both layouts. MC submitted the Draft preliminary layouts and cost estimates for three (3) options to the District for review.

Respectfully Submitted by:

MATHEWS CONSULTING, INC.

Rene L. Mathews, P.E.
President