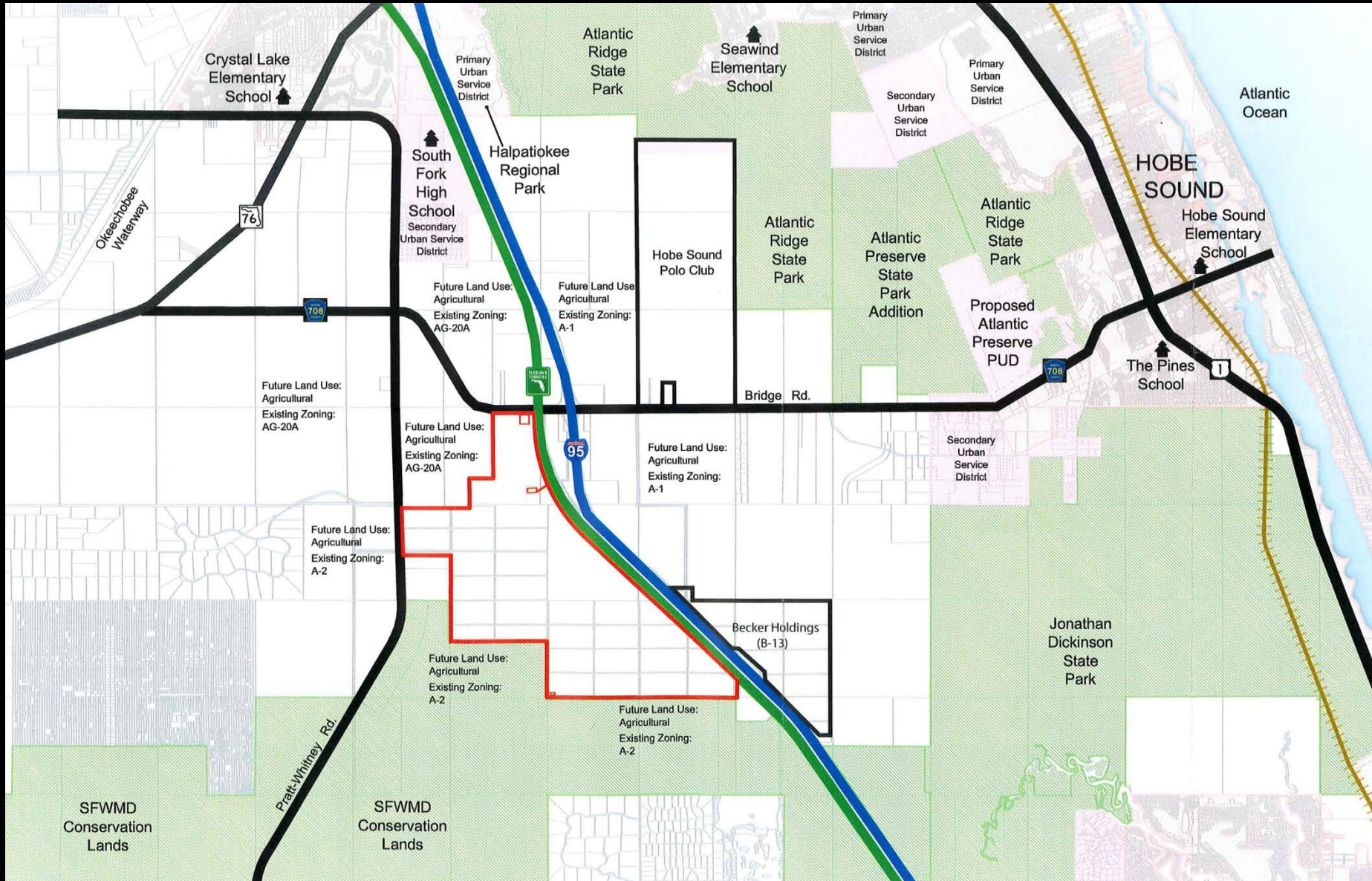
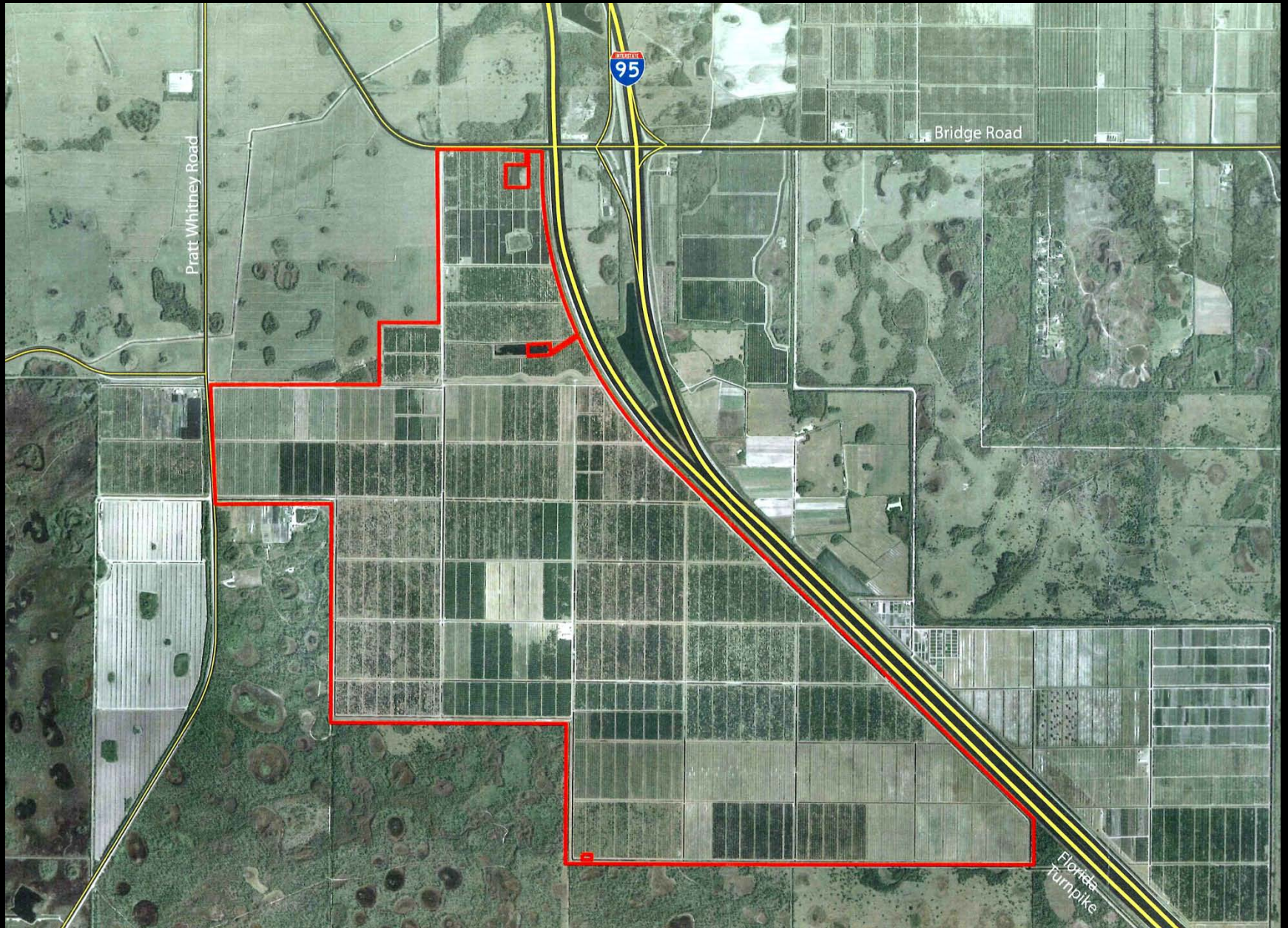


Hobe Grove DRI

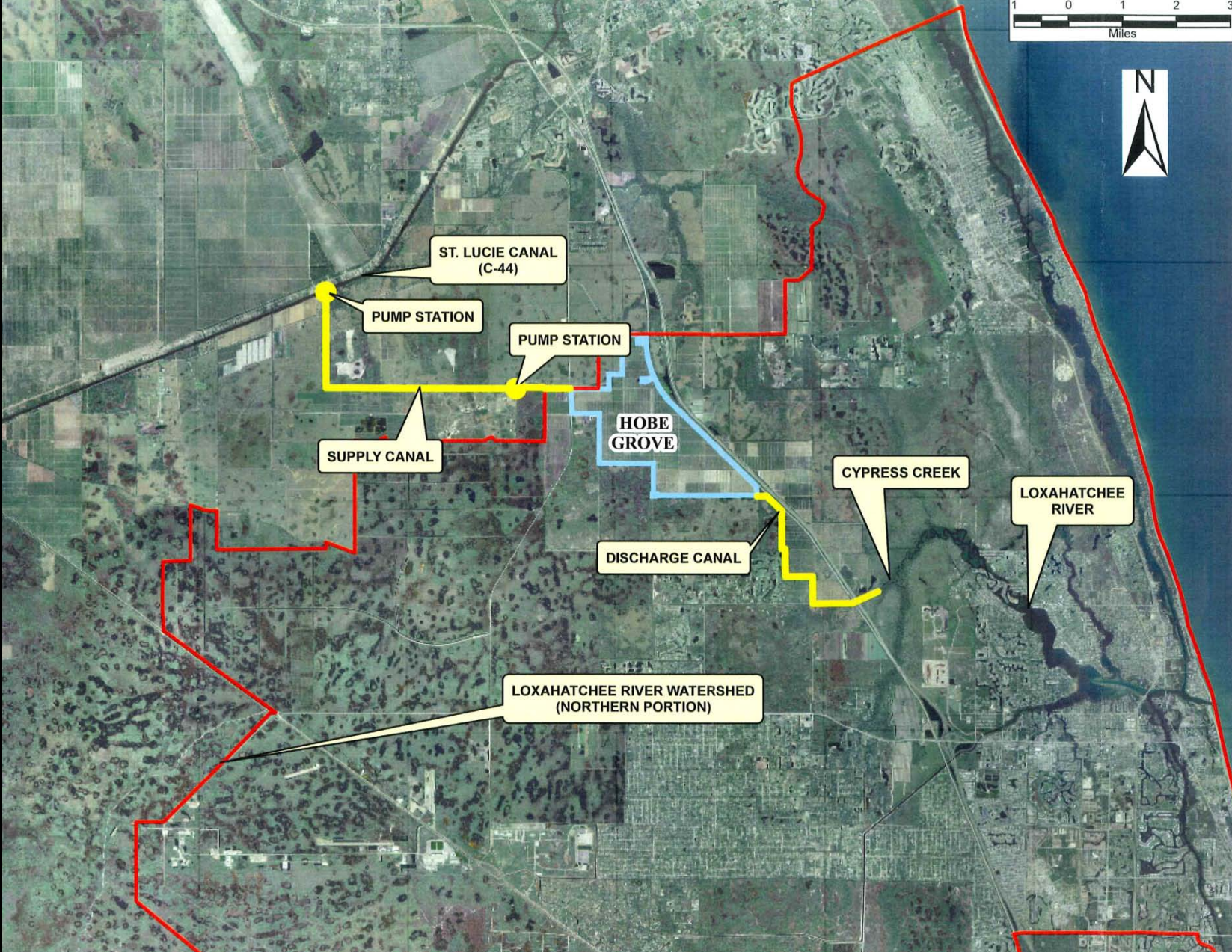
Site Location



Existing Site Aerial



Environmental Resources



Development Concept

- 2823 Acres
- 4,300 Residential Units
- 650,000 SF Town Center
- 3,900,000 SF Mixed Use Research, Office, Education
- 180 Hotel Rooms
- 4 Five-year Phases
- Buildout in 2031

Steps in the DRI Process

- DRI Pre-application Meeting - February 16, 2011
- Finalize Pre-application Summary - Ongoing
- Applicant Submits Application
- First Sufficiency Review
- Second Sufficiency Review (if Necessary)
- Martin County Issues Notice of Public Hearing
- Council Prepares Assessment Report
- Council Transmits Assessment Report to Martin County
- Martin County Holds One or More Public Hearings and Issues a Development Order